

Direct-to-Garment Overview

Cost: \$1.00 per print

- If printing a front and back, that costs \$2.00.
- Print a pair of socks at the same time.

Roland BT-12 Direct-to-Garment Printer

- Prints directly to fabric.
 - Must be at least 50% cotton.
 - White or light color fabric works best; dark colors will darken the design and might not show.
- Washing Instructions:
 - Turn garments inside out before putting them in the washing machine.
 - Hang dry.
 - Lasts at least 50 washes before fading.
 - Do not rub printed surfaces. May cause discoloration due to friction.
- 8.3 x 11.7 inches or 5.9 x 8.3 inches print areas available.

Direct-to-Fabric Printer Process

1. Prepare the fabric by putting the item in a tray.
2. Turn on the Finisher and place the tray inside.
 - a. **Do not place tray lid in the finisher.**
3. Preheat the Finisher. It will reach 170°C.
4. Once heated, shift the lever on the Finisher to the left to press the fabric.
 - a. Wait 30 seconds as the fabric is pressed.
5. Once finished, move the lever back to the center and remove the tray from the Finisher.
6. Move the tray to the Printer.
7. Open **Roland Design** software on the laptop and choose **Advanced Designer**.
8. Choose the type of project (as close to your item as possible) and the size tray.
9. Create or upload your design.
 - a. Compatible files: **JPG, JPEG, or PNG**
10. Print the design in the Printer.
 - a. If the printer says to adjust the height, press the down arrow for 30 seconds and then press Start again to print.
11. After printing is finished, move the tray back to the Finisher
12. Move the lever to the right and fix the fabric.
 - a. Wait minutes for the ink to be fixed.
13. Move the lever back to the center and take the tray out of the Finisher.
14. Remove the fabric from the tray.
15. Repeat steps to print more items.
16. Turn off the Finisher when finished. **PRINTER MUST STAY ON AT ALL TIMES.**

1



PRESS

2



PRINT

3



FIX

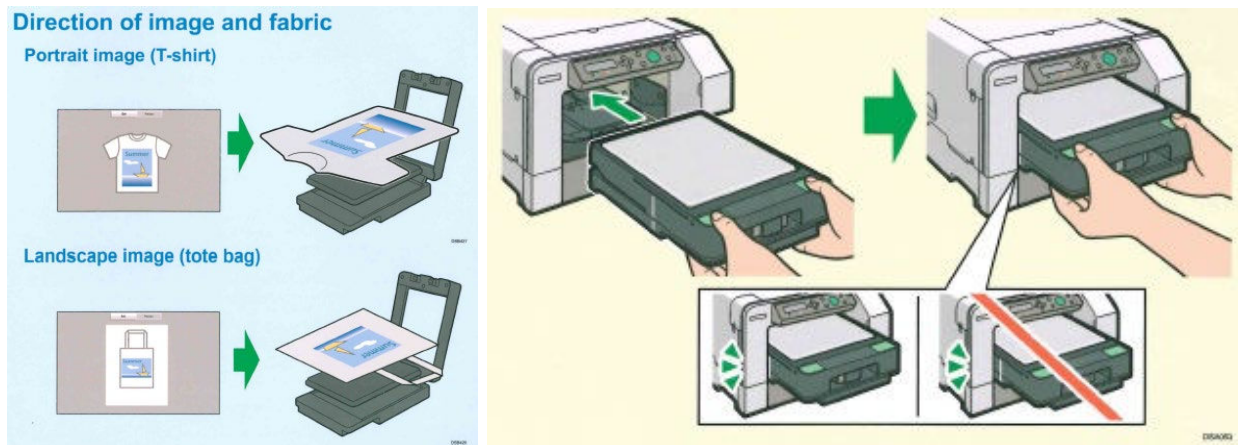


Full Written Tutorial



Video Tutorial

Reference Images



Do not push the tray farther into the printer.

The white line on the side of the tray should line up with the outside of the printer.

Resources

- Roland Technical Support: <https://www.rolanddga.com/support/products/textiles-and-dye-sublimation/versastudio-bt-12-direct-to-garment-printer>
 - Includes the User Guide and video tutorials showing every step of the printing process.