

## Embroidery Machine Overview

**Cost:** \$0.10 per 1,000 stitches. \$1.00 minimum. Must use embroidery thread provided by the library.  
100+ thread colors available.

Bring in stabilizer specifically for your project. The library does not provide any.

### Acceptable Fabrics

Baseball Cap (Not recommended)	Felt	Silk
Canvas	Fleece	Sweater Knit
Cotton	Linen	Sweatshirt
Corduroy	Polyester	Terry cloth
Denim	Satin	T-shirt

Acceptable file type: **PES**


### Brother Entrepreneur Pro X PR1050X Embroidery Machine

- Embroiders up to 10 colors at a time.
- Use more than 10 colors: the machine will prompt when to change thread.
- Embroider appliques, monograms, logos, pictures, words, borders, button-holes, and more!

### How to get PES files


- PE-Design 10: software available in the Inspiration Station to change JPG or PNG files into PES stitch files. Use library of designs in the software and text to create or edit designs.
- Inkscape with Ink/Stitch Extension: free software to create PES files at home. Download Inkscape and add the Ink/Stitch extension to turn designs into the proper format with stitches.
- Buy them online: Etsy and other websites sell PES designs for embroidery to download.

### Embroidery Process

1. Turn on the embroidery machine.
2. Place the fabric in the frame of your choice.
  - a. Available frame sizes: 1.5"x2.375", 4"x4", 5.125"x7.125", 7.875"x11.75", and 7.875"x14"
3. Lock the frame into the embroidery machine. Slide the arm to the right size for the frame.
  - a. Add the stabilizer under the fabric.
4. Upload your design from a USB drive or create a design on the embroidery machine.
5. Press **Edit End** to move to the next window.
6. Specify Embroidery Settings. This is optional and can be skipped. Press **Embroidery**.
7. Change any spools of thread with preferred colors.
  - a. Make sure to follow the tutorial for changing thread.
8. Assign colors to the pattern.
  - a. Use the Temporary Needle Bar Setting  to assign the right spool of thread to each part of the design pattern.
  - b. When finished, press OK to save the changes.
9. Fill out the Embroidery Job Form including the stitch count.
10. Press **Lock** and then the **Stitch button** that should be flashing green.

11. Embroider the design.
12. Remove the frame from the machine and take the fabric out of the frame.
13. Repeat steps 2-12 for any other projects.
14. Turn off the embroidery machine.


### Scanning Process

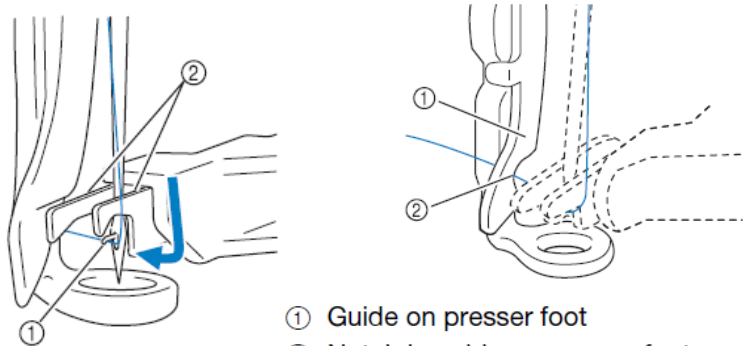
1. Turn on the embroidery machine.
2. Remove the arm from the machine and add the scanning tray.
  - a. Add the needle plate spacer.
3. Place the design on the scanner tray.
4. Scan the design.
5. Edit the scan to best read the design.
6. Save the design to a USB drive to access it again at another time.
7. Remove the scanning tray and needle plate spacer.
  - a. Replace the arm.
8. Place the fabric in the frame of your choice.
  - a. Available frame sizes: 1.5"x2.375", 4"x4", 5.125"x7.125", 7.875"x11.75", and 7.875"x14"
9. Lock the frame into the embroidery machine. Slide the arm to the right size for the frame.
  - a. Add the stabilizer under the fabric.
10. Add extra features to the scan or press **Edit End**.
11. Specify Embroidery Settings. This is optional and can be skipped. Press **Embroidery**.
12. Change any spools of thread with preferred colors.
  - a. Make sure to follow the tutorial for changing thread.
13. Assign colors to the pattern.
  - a. Use the Temporary Needle Bar Setting  to assign the right spool of thread to each part of the design pattern.
  - b. When finished, press OK to save the changes.
14. Fill out the Embroidery Job Form including the stitch count.
15. Press **Lock** and then the **Stitch button** that should be flashing green.
16. Embroider the design.
17. Remove the frame from the machine and take the fabric out of the frame.
18. Embroider the design again on another piece of fabric, or repeat the process to scan another design.
19. When finished, turn off the embroidery machine.

### Changing Thread Process

1. Cut the thread near the spool and remove it from the location.
2. Place the new thread in its location.
3. Tie a **strong** knot with the end of the old thread and the end of the new thread. Suggested: tie multiple knots.
4. At the front of the machine, gently pull the thread out of the needle.
  - a. Pull the thread until the knot between the two thread is in your hand.
5. Cut the thread near the knot and thread the needle.

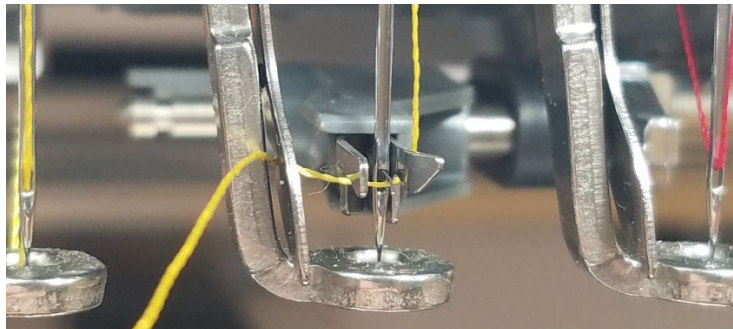
## Thread the Needle Process

1. Make sure the thread is behind the needle bar.
2. Press the **Needle bar/Frame move key**  and make sure the needle you want to thread is chosen.
3. Press the **Automatic Needle-threading button** to activate the auto-threader mechanism.
4. Hook the thread around the auto-threader mechanism as shown here:



- ① Hook
- ② Fork

- ① Guide on presser foot
- ② Notch in guide on presser foot
- Make sure that the thread securely passes through the notch in the guide on the presser foot.




5. Cut the excess thread with the thread cutters.
6. Press the **Automatic needle-threading button** again. The thread is pulled through the needle.

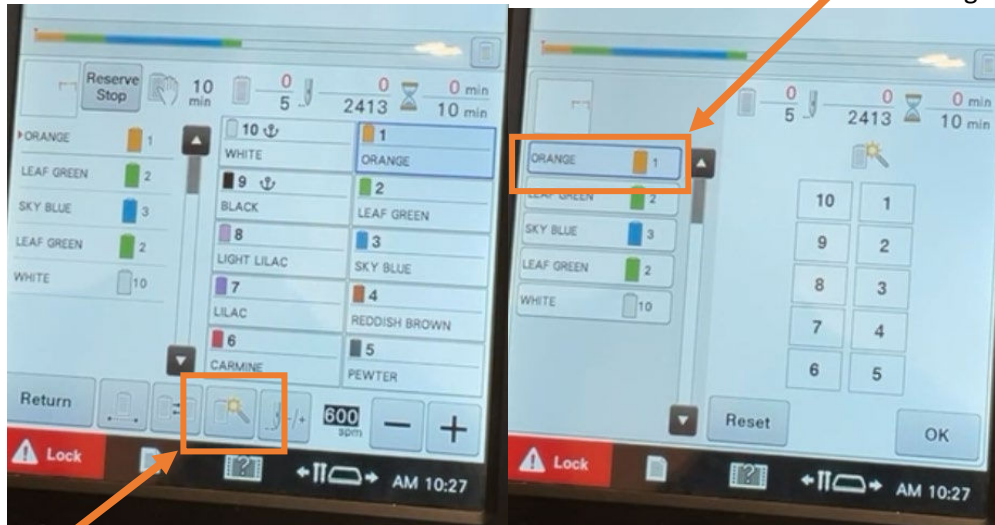
## Resources

- Brother Support, Embroidery Machine: <https://www.brother-usa.com/support/pr1050x#videos-ppsp>
  - Videos about different embroidery machine uses.
- More Brother Videos  
[https://support.brother.com/g/b/faqend.aspx?c=us&lang=en&prod=hf\\_pr1050xeus&faqid=faqh00100624\\_000](https://support.brother.com/g/b/faqend.aspx?c=us&lang=en&prod=hf_pr1050xeus&faqid=faqh00100624_000)
- Download Inkscape: <https://inkscape.org/release/inkscape-1.2.2/>
  - Download the Ink/Stitch Extension: <https://inkstitch.org/docs/install-windows/>
- Ink/Stitch Tutorials: <https://inkstitch.org/tutorials/>
- PE-Design 10 User Manual: <https://manualmachine.com/brother/pedesign10/2546206-user-manual/>

### Assigning Colors with the Temporary Needle Bar Setting

Also known as the Magic Wand Tool:  This is how to pick colors.

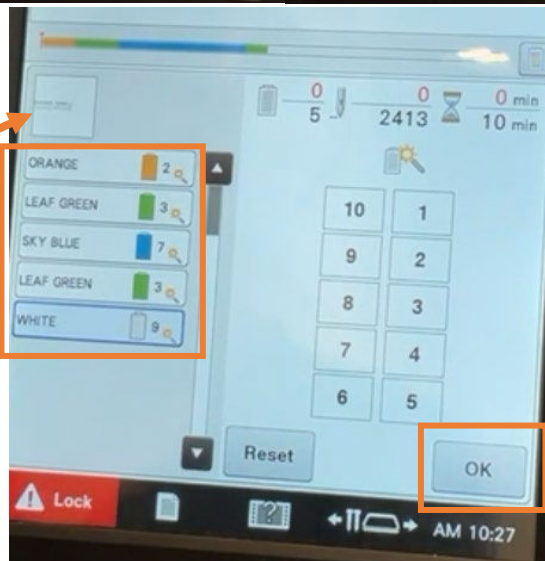
2. Press the color to change



1. Press Temporary Needle Bar Settings

Color Preview

See how the numbers changed



When finished, click OK



Full Written Tutorial



Video Tutorial