

8mm and Super8 Film Converter Tutorial

The Digital Legacy Lab can convert 8mm and Super8 film with the Wolverine MovieMaker Pro. It digitizes slower than real time, at least 5x slower than watching the film normally.

Table of Contents

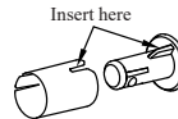
Set up the Machine.....	5	Copy Files.....	7
Recording.....	6	Troubleshooting.....	9
Rewind.....	7		

Set up the Machine

1. Make sure the converter is turned on.
2. Push the film door tab left to flip open the door.
3. Mount the Reels and Film. If your film reel has 8mm (small) mounting hole, mount the reel directly to the left shaft, otherwise use the provided red color reel adapter
 - a. If adapters are needed always place Red on the LEFT side, Grey on the RIGHT side.

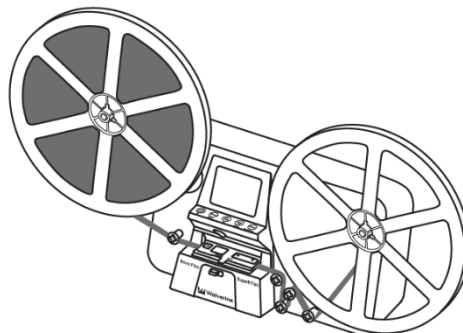


Left Reel Adapter (Red/No-Fin)



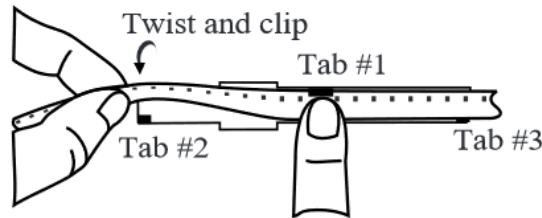
Right Reel Adapter Grey/Finned)

- b. Mount the included 5" reel to the right shaft.
- c. Route the film according to the diagram on the face of the device.



4. Slide open the flap door, putting the film sprocket holes at the top. Place the film underneath the 3 white tabs.
 - a. Place and hold film underneath Tab #1

- b. Twist film slightly and clip film underneath Tab #2



- c. Twist film slightly and clip film underneath Tab #3
- 5. Make sure the film is placed properly, then close the flap door.
- 6. You can make the adjustment of the Movie Register (the film center X and Y). It needs to be adjusted before recording if the default setting is off.
 - a. If the image is showing clearly on the screen, skip this step.
 - b. Choose Frame ADJ from the Menu and press Enter.

Film type:
X adjust, Enter
 X:
 Y:
 W:

← 8MM or SP8

← Select X or Y or W by pressing Enter button

X = shift center to left or right

Y = shift center up or down

W = zoom-in or zoom-out

↑
Adjust the values of X, Y, W by pressing Up or Down buttons

- c. Once satisfied with how the image looks on the screen, press Menu to get back to the Main Menu screen.

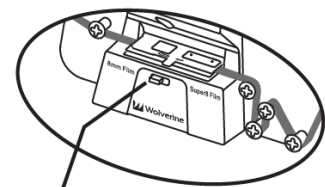
Recording

1. Have Record highlighted on the Menu screen. Press the Up and Down button to get to Record. Press Enter.

Record Playback Rewind (More ▼)	Exposure Sharpness USB (More ▼)	Frame ADJ Language Format (More ▼)	Default Setting Version (More ▼)
1st page	2nd page	3rd page	4th page

2. Select the film type using the Film Selection Lever, then press Enter/Start button to start recording.

- a. For 8mm, push the lever to the left. For Super8, push the lever to the right.
- b. While recording is in progress, a red dot will blink at the upper left corner.
- c. Each image will show on the screen.

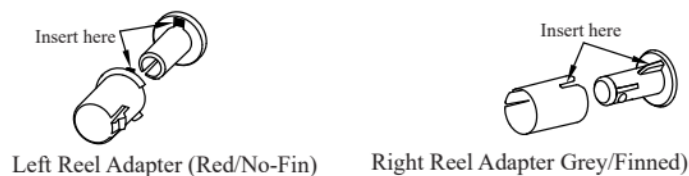


Film Type Lever

- d. The file counter at the lower right corner will increase by one after each recording stop. This number represents the filename of the current recording film.
- e. Press Enter to stop recording.

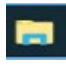
Rewind

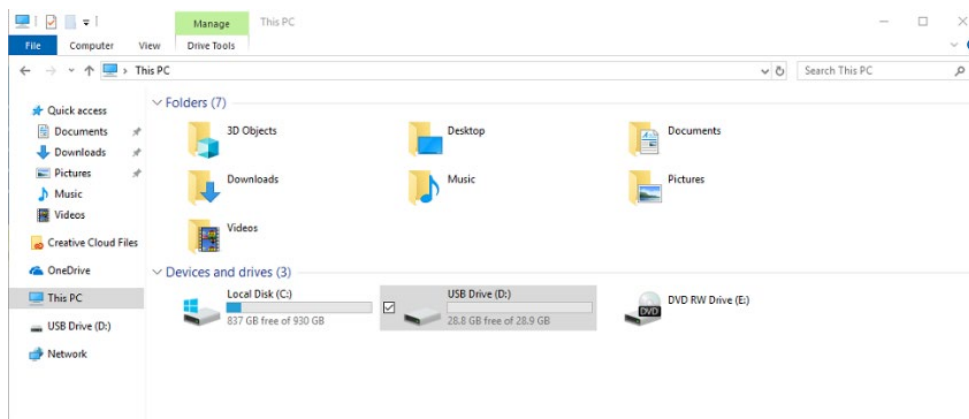
1. Open the flap door and remove film, then close the flap door. Confirm the flap door is not in the way of the rewinding process to prevent film from being scratched.
2. Swap reels. Place an empty reel on the right-side shaft and place film perforation holes on the outside (as shown). Use adapters if needed.



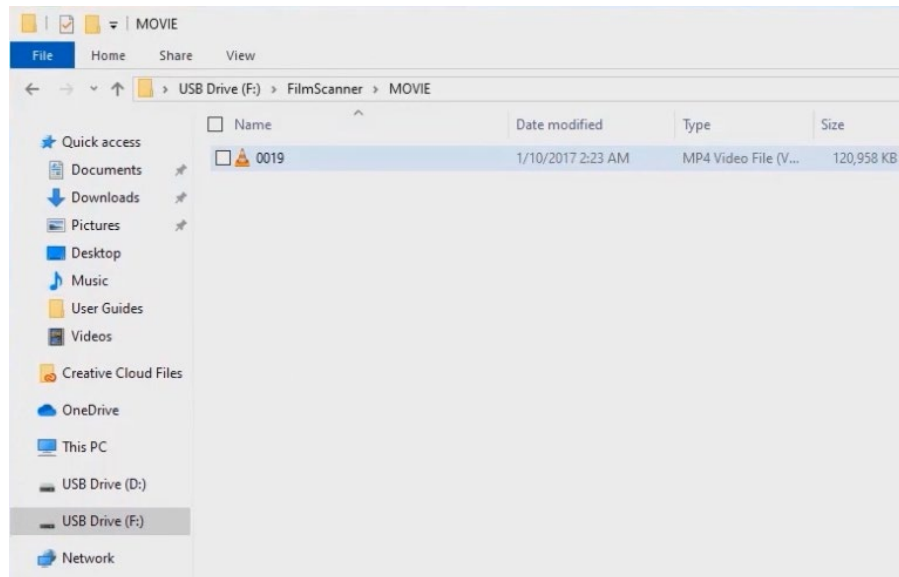
3. Follow the dotted line diagram on the converter, select Rewind in the Menu by pressing the Up and Down buttons. Press Enter. When finished, press Enter again to stop.

Copy Files

1. Press Menu on the converter and then press the Up or Down buttons to USB(More). Press Enter.
 - a. The screen will say “USB Upload.”
2. Go to File Explorer  on the computer. The converter will show up as a USB Drive (the drive letter may change depending on what else is currently running on the computer.)





3. Double click on Film Scanner, then MOVIE. Your files are in this folder.



4. If you have not yet, plug your USB drive into the computer.
5. Click and drag the folder of your tracks to your USB drive.
6. **Make sure to delete your files from the converter.**
 - a. Option 1: Delete the files from the MOVIE folder on the computer.
 - i. In the MOVIE folder, press Ctrl+A to select all.
 - ii. Press the Delete icon in the folder.
 - b. Option 2: Delete from the converter.
 - i. Press Menu on the converter.
 - ii. Press the Up and Down buttons until Format is highlighted. Press Enter.
 - iii. Choose Yes with the Up and Down buttons and press Enter to delete all files from the converter

Files MUST be manually deleted from the converter. They will not automatically delete.

Troubleshooting 8mm and Super8 Film Converter

Issue	Reason	Solution
My film will not advance through the machine	Film has imperfect splices, film is bent, or broken sprocket holes	Open the flap door while film is stuck, move the problem frames forward. Then close the flap door and continue recording
Some segments are jittery and some are not	Sprocket holes may be damaged from film being played too many times	Try recording and converting the film backwards to use the good edge of the sprocket holes. Then use software to reverse the video
 <p style="text-align: center;">Imperfect/Bad edge sprocket holes Normal ←Bad edges→ </p>		
My film won't go through the machine	Some old film is wider than 8mm at some sections due to loose manufacturing	Place a piece of paper carefully in the track table to keep it wide enough to fit this film
		
The speed of the video is too fast/slow		Edit in software such as Adobe Premiere or VLC Media player
My film is offset.	Film bed needs to be adjusted to center on your film.	<ol style="list-style-type: none"> 1. On the film converter, select Menu. 2. Navigate to Frame ADJ using the arrow buttons. Press enter. 3. Select X (left/right), Y (up/down), or W (zoom in/out) by pressing the Enter button, then adjust with the arrow buttons.